



MINGACHEVIR  
STATE  
UNIVERSITY

# POLICY DOCUMENT

# CLEAN WATER POLICY

## **Website**

[www.sustainable.mdu.edu.az](http://www.sustainable.mdu.edu.az)

## **Email**

quality@mdu.edu.az

## **Address**

D.Aliyeva st. 21. Mingachevir





01

# Document Information

Scope	Information
Document Title	Clean Water Policy
Document Type	Policy Document
Document Code	MDU-POL-AF-005
Version	1.1
Initial Release Date	2024
Last Revision Date	2026
Validity Period	2024–2027
Document Status	Approved
Information Classification	Public
Prepared by	Department of Physics and Ecology
Approved by	Academic Council of Mingachevir State University
Responsible Unit	Facilities Department
Owner	Department of Physics and Ecology
Scope	Academic staff, students, visiting scholars, and researchers
Related Documents	Environmental Policy, Energy Efficiency and Green Infrastructure Policy, Health, Wellbeing and Safety Policy
Superseded Document	Initial version dated 2024
Distribution	Official university website and internal systems
Storage Location	Electronic Document Management System

# Purpose:

The Clean Water Policy aims to ensure the efficient, responsible, and sustainable management of water resources at Mingachevir State University. It establishes a comprehensive framework for reducing water consumption, preventing pollution, improving water-use efficiency, and safeguarding water quality across all academic, administrative, and operational activities.

The policy supports the development and implementation of effective water management practices, including monitoring, conservation, reuse where feasible, and the adoption of environmentally sound technologies. It also promotes compliance with national regulations and alignment with international standards related to water sustainability.

In addition, the policy seeks to raise awareness among students, academic staff, and administrative personnel regarding the importance of water conservation and environmental responsibility. Educational initiatives, training programs, and campus-based activities are encouraged to foster behavioral change and responsible water use.

Furthermore, the policy contributes to the integration of sustainable water management principles into teaching, research, and innovation activities. It encourages interdisciplinary approaches and supports research initiatives aimed at addressing water-related challenges, thereby strengthening the University's role in promoting sustainable development and environmental stewardship.

**MINGACHEVIR STATE UNIVERSITY**

## CLEAN WATER POLICY

Conserving water. Protecting life. Sustaining the future.

“Water is life. Let's protect it together.”

At Mingachevir State University, we are committed to responsible water stewardship and the sustainable management of water resources. This policy promotes water conservation, efficient use, and protection of water quality to support a healthy campus and community.

- WATER CONSERVATION**  
Promoting mindful water use and conservation practices across campus to reduce consumption and prevent waste.
- EFFICIENT WATER USE**  
Implementing water-efficient technologies and practices in facilities, landscaping, and daily operations.
- WATER QUALITY PROTECTION**  
Safeguarding water quality by preventing pollution and ensuring proper treatment and disposal of wastewater.
- SUSTAINABLE WATER SOURCES**  
Encouraging rainwater harvesting, reuse, and the adoption of sustainable water sources to enhance resilience.
- AWARENESS & ENGAGEMENT**  
Raising awareness and encouraging active participation of students, staff, and the community in water stewardship.


EVERY DROP COUNTS  
EVERY ACTION MATTERS

**CLEAN WATER TODAY,  
A BETTER TOMORROW FOR ALL.**

Clean water represents a fundamental resource essential for human health, environmental sustainability, and the effective functioning of higher education institutions. Universities, as centers of knowledge and innovation, hold a strategic responsibility in promoting responsible water use, protecting water quality, and developing sustainable solutions to water-related challenges. Efficient water management is increasingly important in the context of global environmental pressures, including climate change, resource scarcity, and growing demand.

Mingachevir State University recognizes the critical importance of preserving water resources both within the campus and in the broader regional context. Located in a city with significant industrial and energy infrastructure, the University acknowledges its role in minimizing environmental impact and contributing to sustainable resource management. Institutional commitment is reflected in efforts to improve water efficiency, prevent contamination, and ensure the responsible use of water across all operations.

The Clean Water Policy establishes a structured framework for managing water consumption, maintaining water quality, and reducing water-related risks. It promotes the adoption of modern technologies, systematic monitoring of water usage, and the implementation of preventive measures aimed at reducing waste and pollution. The policy also supports compliance with national legislation and alignment with international sustainability standards. The policy further emphasizes transparency, accountability, and continuous improvement in water management practices. Regular monitoring, evaluation, and reporting processes ensure that progress is measurable and aligned with institutional objectives.



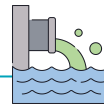
**Water Efficiency:** The optimal use of water resources to achieve maximum performance with minimal waste. It involves reducing unnecessary consumption through improved technologies, management practices, and behavioral change.



**Water Conservation:** The practice of reducing water usage and preventing waste in order to preserve available resources. It includes actions such as minimizing leaks, using water-saving devices, and promoting responsible consumption habits.



**Water Quality:** The physical, chemical, and biological characteristics of water that determine its suitability for specific uses. Maintaining high water quality is essential for health, safety, and environmental protection.



**Wastewater Management:** The collection, treatment, and safe disposal or reuse of wastewater generated from university activities. Effective management helps prevent environmental pollution and supports sustainable water use.



**Sustainable Water Management:** An integrated approach to managing water resources in a way that meets current needs without compromising the ability of future generations to meet theirs. It combines efficiency, conservation, protection, and long-term planning principles.

# Scope of Application

The Clean Water Policy applies to all academic, administrative, and operational activities carried out at Mingachevir State University. Coverage includes all campus facilities such as teaching buildings, laboratories, offices, libraries, dormitories, cafeterias, and technical infrastructure where water is used, stored, or managed.

Applicability extends to all members of the University community, including academic staff, administrative personnel, students, visiting scholars, contractors, and external service providers operating on campus. All stakeholders are required to comply with established standards for responsible water use, protection of water resources, and prevention of pollution.

The scope encompasses the full cycle of water management, including water supply, consumption, distribution systems, wastewater collection and treatment, and discharge or reuse practices. It also covers infrastructure maintenance, leak detection and repair, installation of water-efficient technologies, and monitoring systems designed to improve efficiency and reduce losses.

Activities with potential impact on water quality—such as laboratory operations, maintenance works, cleaning services, and waste disposal—are included within the policy framework. Preventive measures, risk management procedures, and safety protocols are applied to minimize contamination and ensure compliance with environmental regulations.

In addition, the scope extends to teaching, research, and community engagement activities related to water management and environmental sustainability. Academic programs, student projects, and institutional initiatives are encouraged to incorporate water conservation principles, contributing to knowledge development and practical application in this field.

## Sustainable Water Use

Water resources are used in a responsible and efficient manner to ensure long-term availability. Consumption is minimized without compromising the quality of academic and operational activities.

## Water Conservation and Efficiency

Measures are implemented to reduce water waste and improve efficiency through modern technologies and good management practices. Continuous improvement in water-saving performance is prioritized.

## Protection of Water Quality

All activities are conducted in a way that prevents water pollution and maintains safe water standards. Proper handling of chemicals, waste, and wastewater is ensured to protect both human health and the environment.

## Monitoring and Data-Driven Management

Students and staff are encouraged to adopt responsible water use behaviors through training, awareness campaigns, and educational activities. Building a culture of sustainability is considered essential.

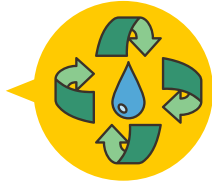
## Awareness and Capacity Building

The application of new ideas and technological advancements is encouraged, aiming to ensure long-term and sustainable impact of collaboration outcomes.

## Compliance and Continuous Improvement

All water-related practices align with national regulations and international sustainability standards. Policies and actions are regularly reviewed and improved based on performance results and evolving needs.

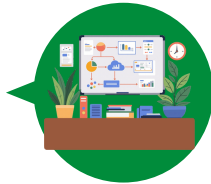
# Strategic Objectives



**Improve Water Use Efficiency:** Enhance the efficient use of water across all university facilities by reducing consumption and minimizing losses. Introduce water-saving technologies and optimize existing systems to ensure sustainable usage.



**Ensure Water Quality and Safety:** Maintain high standards of water quality for all uses within the campus. Prevent contamination through proper wastewater management and adherence to environmental and health regulations.



**Strengthen Monitoring and Management Systems:** Establish systematic monitoring mechanisms to track water consumption and performance indicators. Use data-driven approaches to support effective planning and decision-making.



**Promote Awareness and Behavioral Change:** Increase awareness among students and staff regarding responsible water use and environmental protection. Encourage active participation in water conservation initiatives and sustainable practices.



**Integrate Sustainability into Teaching and Research:** Incorporate water management and sustainability principles into academic programs and research activities. Support innovation and interdisciplinary approaches to address water-related challenges.

# Key Performance Indicators (KPIs)

Objective	Indicator (KPI)	Baseline (2024)	Target (2027)	Timeline	Responsible Unit
Improve water use efficiency	Water consumption per capita (m <sup>3</sup> per student/staff annually)	16 m <sup>3</sup>	10 m <sup>3</sup>	2024–2027	Facilities and Technical Operations Department
Reduce water losses	Percentage of water loss/leakage in campus systems	15%	≤7%	2024–2027	Facilities and Technical Operations Department
Ensure water quality and safety	Compliance rate with water quality standards	92%	100%	2024–2027	Facilities and Technical Operations Department
Strengthen wastewater management	Percentage of wastewater properly managed or reused	25%	45%	2024–2027	Facilities and Technical Operations Department
Enhance monitoring systems	Share of buildings equipped with smart water meters	20%	75%	2024–2027	Advisor on Economic Affairs / Facilities and Technical Operations
Promote awareness and engagement	Number of water-related training and awareness activities (annual)	21	35	2024–2027	Human Resources / SDG Team

# Implementation Mechanism

Implementation of the Clean Water Policy is carried out through a structured and coordinated approach that integrates planning, execution, monitoring, and continuous improvement. Clear roles and responsibilities are assigned to relevant structural units to ensure effective application across all university operations.

Operational implementation is led by the Administrative and Facilities Department in cooperation with the Environmental Sustainability Unit. Activities include monitoring water consumption, maintaining infrastructure, preventing leakages, and introducing water-efficient technologies such as smart meters and low-flow systems. Regular technical inspections and maintenance ensure the reliability and efficiency of water supply and wastewater systems.

Planning and coordination are supported by the Sustainability Committee, which aligns water-related initiatives with institutional objectives and sustainability priorities. Annual action plans and performance indicators (KPIs) are developed to guide implementation and measure progress.

Monitoring and evaluation mechanisms ensure that implementation remains evidence-based and results-oriented. Data on water consumption, quality, and system performance are collected and analyzed regularly, enabling timely interventions and informed decision-making.

Capacity-building and awareness-raising activities are integrated into the implementation process. Training sessions, campaigns, and educational initiatives are organized to promote responsible water use among students, academic staff, and administrative personnel.

## 10

# Governance and Responsibilities

Structure / Role	Responsibilities
<b>Rector</b>	Provides overall leadership in the implementation and oversight of the Clean Water Policy, ensures the integration of water sustainability into institutional strategy, and assumes responsibility at the institutional level.
<b>Academic Council</b>	Defines strategic directions related to water management and sustainability, approves key policy measures, and provides guidance on aligning academic and operational activities with sustainability priorities.
<b>Facilities and Technical Operations Department</b>	Acts as the primary implementing body, manages water supply systems, monitors consumption, prevents leakages, and ensures efficient operation and maintenance of water infrastructure.
<b>Center for Environmental Sustainability and Climate Action</b>	Coordinates environmental initiatives, monitors water-related KPIs, supports compliance with regulations, and promotes sustainable water management practices across the University.
<b>Faculties</b>	Integrate water sustainability principles into teaching and research activities, support awareness initiatives, and monitor implementation at the faculty level.
<b>Department of Scientific Research and Innovation</b>	Supports research on water management, sustainability, and environmental protection, and facilitates innovation and knowledge transfer in water-related fields.

## 11

# Monitoring and Evaluation

Monitoring and evaluation of the Clean Water Policy at Mingachevir State University are implemented through a structured, evidence-based system that ensures effectiveness, accountability, and continuous improvement. The process is aligned with the University's operational scale and integrates both quantitative indicators and qualitative assessments.

Regular monitoring focuses on water consumption and system performance across MDU's academic buildings, administrative facilities, dormitories, and other campus infrastructure. Data on water usage, leakage levels, and system efficiency are collected on a monthly basis by the Facilities and Technical Operations Department and analyzed comparatively with previous periods. Given the University's size, these indicators are normalized per capita to ensure accurate and comparable evaluation.

Evaluation is not limited to technical performance. The process also considers awareness levels, participation rates in water-related initiatives, and the effectiveness of training and educational activities. Faculties, the SDG Team, and the SDG Club contribute to monitoring by reporting on activities, campaigns, and student engagement related to water conservation.

Monitoring results are regularly reviewed by the Sustainability Committee, where progress against defined KPIs is assessed and key challenges are identified. Based on these findings, targeted corrective measures and improvement actions are developed. Periodic and annual reports are prepared and submitted to the University leadership to support evidence-based decision-making and strategic planning.

Transparency is ensured through the systematic documentation and dissemination of results. Key findings are shared within the University through internal systems and, where appropriate, published via official communication channels. Supporting evidence—including technical data, inspection reports, and records of activities—is maintained to verify outcomes and strengthen institutional accountability.

Continuous improvement forms a central element of the monitoring framework. Collected data and evaluation results are integrated into future planning cycles, enabling MSU to refine its water management practices, adopt more efficient technologies, and enhance its overall sustainability performance over time.

# Stakeholder Engagement

Effective implementation of the Clean Water Policy at Mingachevir State University relies on the active engagement of internal and external stakeholders. A participatory approach ensures that water management practices are inclusive, transparent, and aligned with the needs of the University community.

Internal stakeholders, including academic staff, administrative personnel, and students, play a central role in promoting responsible water use. Awareness campaigns, training sessions, and educational activities are organized to encourage sustainable behaviors and increase participation in water conservation initiatives. Faculties and student-led groups such as the SDG Team and SDG Club actively support engagement through projects, campaigns, and volunteer activities.

External stakeholders, including governmental bodies, local authorities, and environmental organizations, contribute to the development and implementation of water-related initiatives. Cooperation with relevant institutions supports compliance with regulations, exchange of expertise, and access to best practices in sustainable water management.

Collaboration with industry partners and service providers further strengthens implementation capacity. Engagement in joint projects, technical consultations, and infrastructure improvements enables the University to adopt efficient technologies and innovative solutions.

Feedback mechanisms form an integral part of stakeholder engagement. Surveys, consultations, and communication platforms are used to gather input from students and staff, ensuring that their perspectives are considered in decision-making processes.

13

# Alignment with Sustainable Development Goals

Efficient water use, leakage reduction, and water quality protection support **SDG 6** – Clean Water and Sanitation by ensuring sustainable management of water resources within the University.

Green campus initiatives, including water conservation systems and sustainable infrastructure, align with **SDG 11** – Sustainable Cities and Communities by promoting a healthier and more resilient campus environment.

Water efficiency measures and pollution prevention contribute to **SDG 13** – Climate Action by reducing resource waste and environmental impact.

# Evidence and Reporting

Implementation of the Clean Water Policy at Mingachevir State University is supported by a structured evidence and reporting system that ensures transparency, accountability, and data-driven decision-making. All water-related activities are systematically documented and verified through reliable data sources and supporting materials.

The evidence base primarily includes quantitative data on water consumption, leakage rates, and water quality indicators. These data are collected on a regular basis by the Facilities and Technical Operations Department and analyzed to demonstrate progress against established KPIs. Comparative analysis with previous periods enables the identification of trends, improvements, and areas requiring corrective action.

In addition to technical data, qualitative evidence is also maintained. Activities such as awareness campaigns, training sessions, infrastructure improvements, and environmental initiatives are documented through reports, photographs, participant lists, and event records. Contributions from faculties, the SDG Team, and the SDG Club are included to reflect the full scope of implementation.

Reporting is conducted on a periodic and annual basis. The Sustainability Committee compiles comprehensive reports that summarize performance, highlight achievements, and identify challenges. These reports are submitted to the University leadership to support strategic decision-making and institutional planning.

Transparency is ensured through the dissemination of key findings via internal systems and, where appropriate, public platforms such as the University's official website. Verified and well-documented evidence strengthens institutional credibility and demonstrates commitment to sustainable water management.